

HUB

Music Technology

Empowering hubs - to equip schools - to inspire learners

“so enthused
by the whole
experience”



CROWN LANE
EDUCATION



Empowering hubs - to equip schools - to inspire learners

© 2023 Crown Lane Productions Ltd. Limited Company in England and Wales No. 6452555

Introduction

Why You Can Trust Us to Support You



Crown Lane is an award-winning, established (2007) recording studio - reviewed in Music Teacher magazine (June 2023) - aiming to be London's most accessible, sustainable and community focused studio. Trusted by the BBC, Tiktok, Naxos, Loopmasters and many more.

Uniquely run here in London by certified music educators - recording over 3000 releases, and hosting over 17,000 acts in our studios.

We know the current music industry - and as teachers, we understand the world of education. We believe we've created a unique space where the two worlds can co-exist - equipping teachers and inspiring learners - efficiently.

What we Offer (Summary)

Online training in Music Technology

Available to inspire every music teacher in your hub. The course license includes music software ◀ CUBASE

Continuous Professional Development (CPD)

Online conference - hosted and broadcast by us equipping every music, media and music technology teacher.

Community (Support and Engagement)

Weekly bookable online community. Safely know that everyone in your team has a community around them

PLUS! (through hub annual membership):

Discounted in-person full-day workshops, studio visits and live-streamed (to classroom) studio training and free relevant behind-the-scenes music industry videos (uploaded monthly)

1



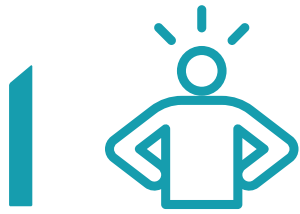
2



3



What we offer...



“immediately
up-skill your
teachers”

Online training in Music Technology

We've crafted an online course to immediately up-skill your teachers in music technology. It can be undertaken at any pace, in sections, dipped into as a reference, or used as a teaching resource by anyone in your hub. Developed with universal accessibility in mind, your students can use it too. Uniquely, the resources (tracks, stems, samples, 100 page handbook) once downloaded - are yours to use forever - as is the included Cubase LE software - should you need a DAW.

The course introduces and refreshes knowledge of music software - Digital Audio Workstations (DAWs) using the framework of learning to mix - to teach skills in EQ and many other useful plugins, live sound and studio sound.

You can sample part of the Sculpt course for free now at crownlanestudio.co.uk/education and explore the full course content.

Hub access - when continued into the subsequent year will reactivate the license as well as giving you access to new courses and updates



...in more detail

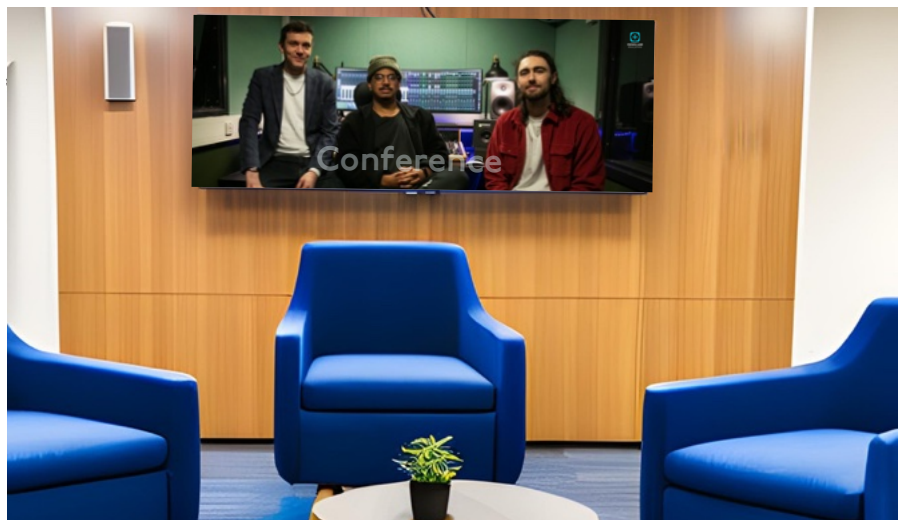
2

Continuous Professional Development (CPD)

Once a year, we create an opportunity to bring everyone together. Co-curated by teachers, we produce a lively online music technology conference to ensure your teachers receive the input you know they need.

Covering changes in the industry and curriculum - with a relevant theme for the year, this conference provides the perfect creative learning environment - and ensures teachers remain ahead of the fast-changing sector.

“ an
opportunity
to bring
everyone
together ”



Our aim is that delegates have a fun and richly beneficial time, though remaining in the style of a contemporary 'creative industry' event. Expect music, live-streamed real-world education segments and region specific training. Our model (affectionately known by us as 5-10-15) means each section is conducted in fast-paced segments of no more than 5, 10, or 15 minutes. This model retains interest, includes plenty of humour and provides invaluable CPD.

Elements of the conference will be provided afterwards as short videos for your future use. Of course the conference is designed with accessibility in mind (- more of which, later...)

3



“ your
teachers
always have
somewhere
to turn
”

Online Community (Support and Engagement)

Crown Lane is a life changing place.

Every Thursday and Friday we open our doors (in person, and online). Thursdays are for equipping and creating opportunities for musicians - and Fridays our doors are physically open to everyone.

We want you, your music, media and music tech teachers in your hub to be a part of this.

As part of the hub membership, each Thursday - if required - teachers can join the community. To make it more accessible - the weekly 5pm slot is bookable online, This gives you the reassurance that your teachers always have somewhere to turn where they can get support from the community and remain up-to-date.



PLUS!

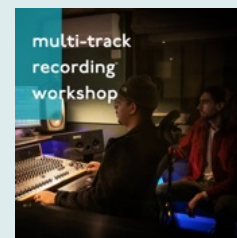
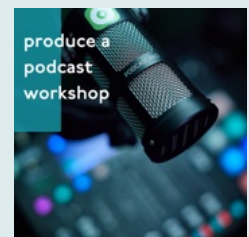
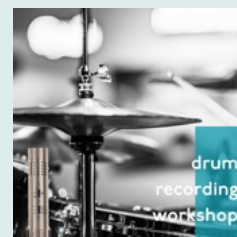
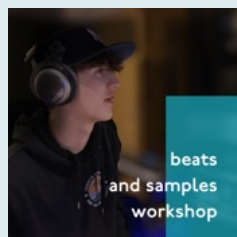


PLUS! (included with hub annual membership)

One-Day Workshops



60% discount on in-person full-day workshops at Crown Lane. A rolling programme of topics relevant to current exam board requirements, from 10-3pm. You can come alone, book on with your students, or send your students. Each workshop is tailored to the needs of the group. Example courses include:



Teacher directed studio experiences



50% off studio visits - tailored to your group - you receiving one hour with a member of our team - the remainder of the day is yours to use with your group as you wish. We can extend our support if arranged in advance - though we've found this model empowering for teachers.

In the past, these sessions have been used to:

- refine coursework,
- record practise performances,
- experience a studio environment
- work with industry equipment and microphones.
- explore isolated multitracking

Behind the Scenes Videos



Much of what goes on in studios remains hidden. Not any more. Every month, we create a new behind-the-scenes video during a recording session. We call these "talking technical" and they give a constantly updating narrative on today's recording so you, your teachers and your students remain up-to-date with relevant training.

Priority on Work Placement Days



Partnering with the Jack Lonergan Foundation - we've created 24 sound and videography monthly placements for young people. Visit www.crownlanestudio.co.uk/live to find out more and apply on behalf of specific pupils who you deem eligible - ie, those who wouldn't normally get this kind of opportunity.

Responsive

Because of the changing nature of music technology education - we reserve the right to amend our offering, particularly in response to your feedback - to ensure your teachers always feel supported. We also have big plans over 2024/5, including partnerships to provide more areas of training.



Access

Sound Access Accessible Education

We've intentionally built accessibility into the fabric of all our training and presentations. Most users won't even spot the subtle, but robust departures from traditional learning methods. Our aim is inclusion by design - exactly how we've built our studio too. We welcome your input to the journey.

For full information about our accessible studio - please visit www.crownlanestudio.co.uk/access



Accessible website

Fully customisable web-based platform to the needs of the learner



Audio Description

Every element is audio described by design and each element starts with contents



Assessment

Assessment based on improvement from benchmark measurements not reaching attainment



Screen layout

High contrast, clear spacing and unambiguous backgrounds



Words

Never less than font size 14 anywhere - often far larger - and captions throughout



Easy to Read

Every effort is made to ensure both spoken and written content is easy to read by design



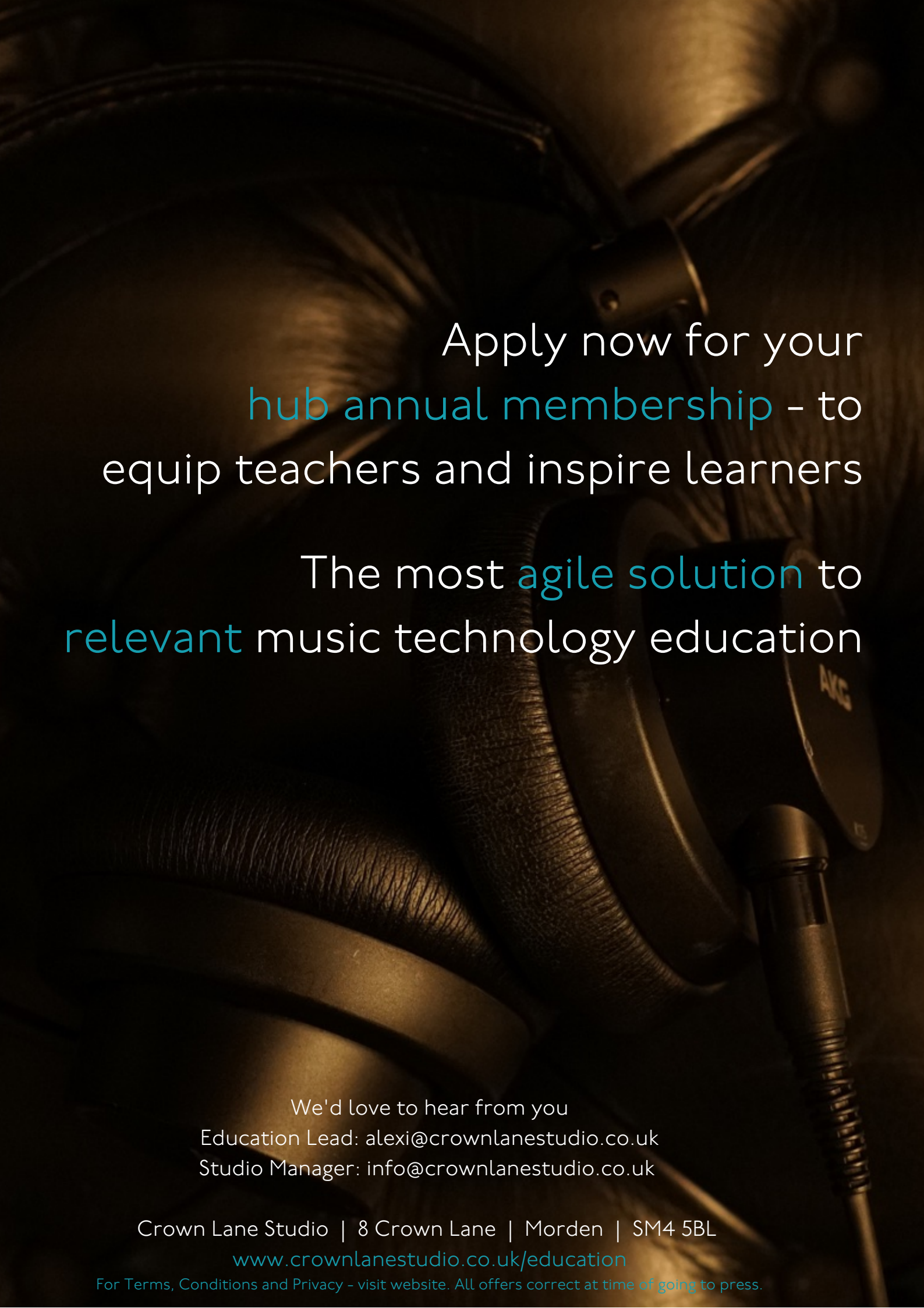
Continuous development

Every part of the course continues to be constructed and improved with input and regular consultation



Flexible

Learning is sequential though each element works standalone and can be customised



Apply now for your
hub annual membership - to
equip teachers and inspire learners

The most **agile solution** to
relevant music technology education

We'd love to hear from you
Education Lead: alexi@crownlanestudio.co.uk
Studio Manager: info@crownlanestudio.co.uk

Crown Lane Studio | 8 Crown Lane | Morden | SM4 5BL

www.crownlanestudio.co.uk/education

For Terms, Conditions and Privacy - visit website. All offers correct at time of going to press.